

# Sweet-Thunder

## 1967-1969 Camaro Chambered Exhaust

**Use of a vehicle hoist is highly recommended.**

### **Step 1**

Remove existing exhaust components including factory hangers. On convertible models remove rear cross-brace during installation, reinstall after completion.

### **Step 2**

Install head pipes with gaskets supporting at rear of pipe in general position of final install. Loosely tighten flanges to support weight of pipe.

### **Step 3**

Slip a 63.5mm clamp over inlet of each muffler with bolts positioned to the center of the car.



Install bent mufflers, support rear of muffler in general area of final position.

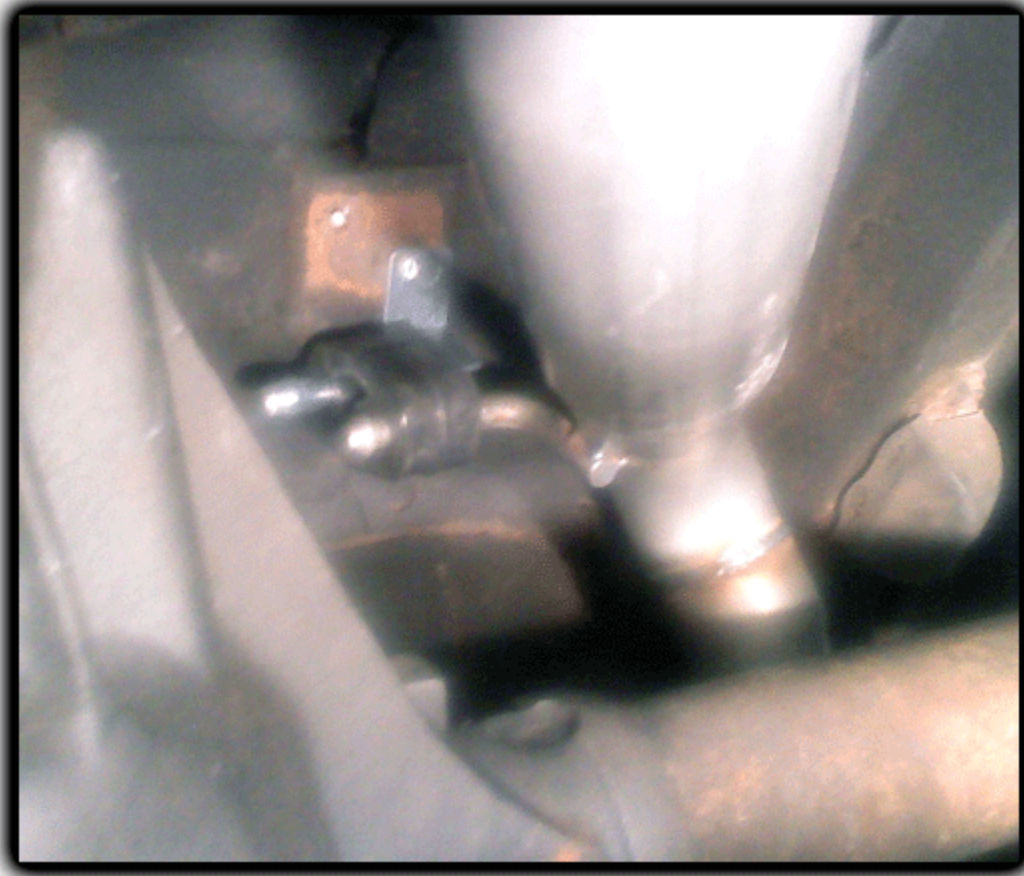


Attach support strap between clamp studs loosely tightened to retain position while fitting system for final tightening.

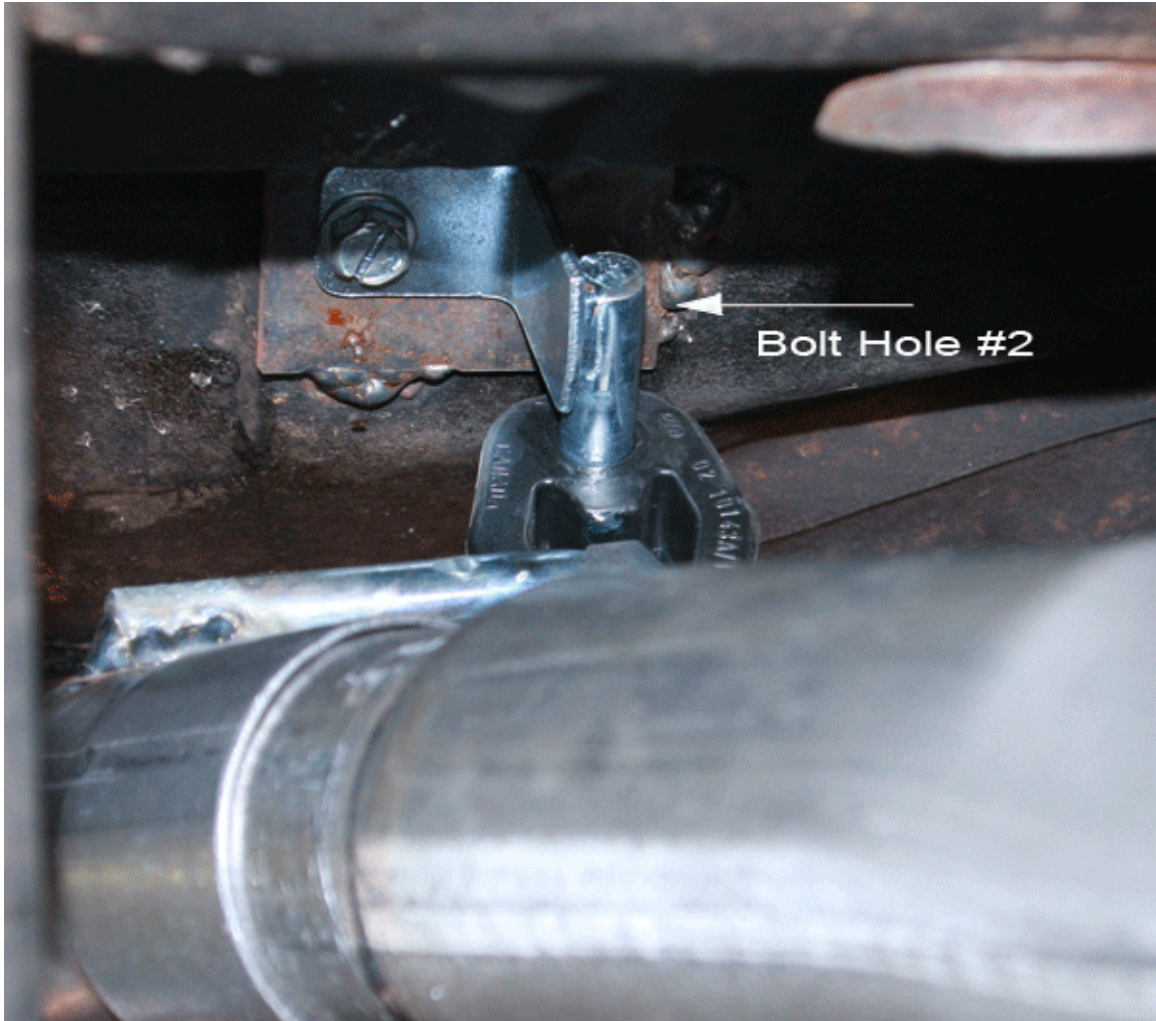
**Step 4**

Install ½" (larger) single hole hanger rods. Attach using 5/16 bolt supplied with kit.

Drivers Side Location



Passenger Side  
Location



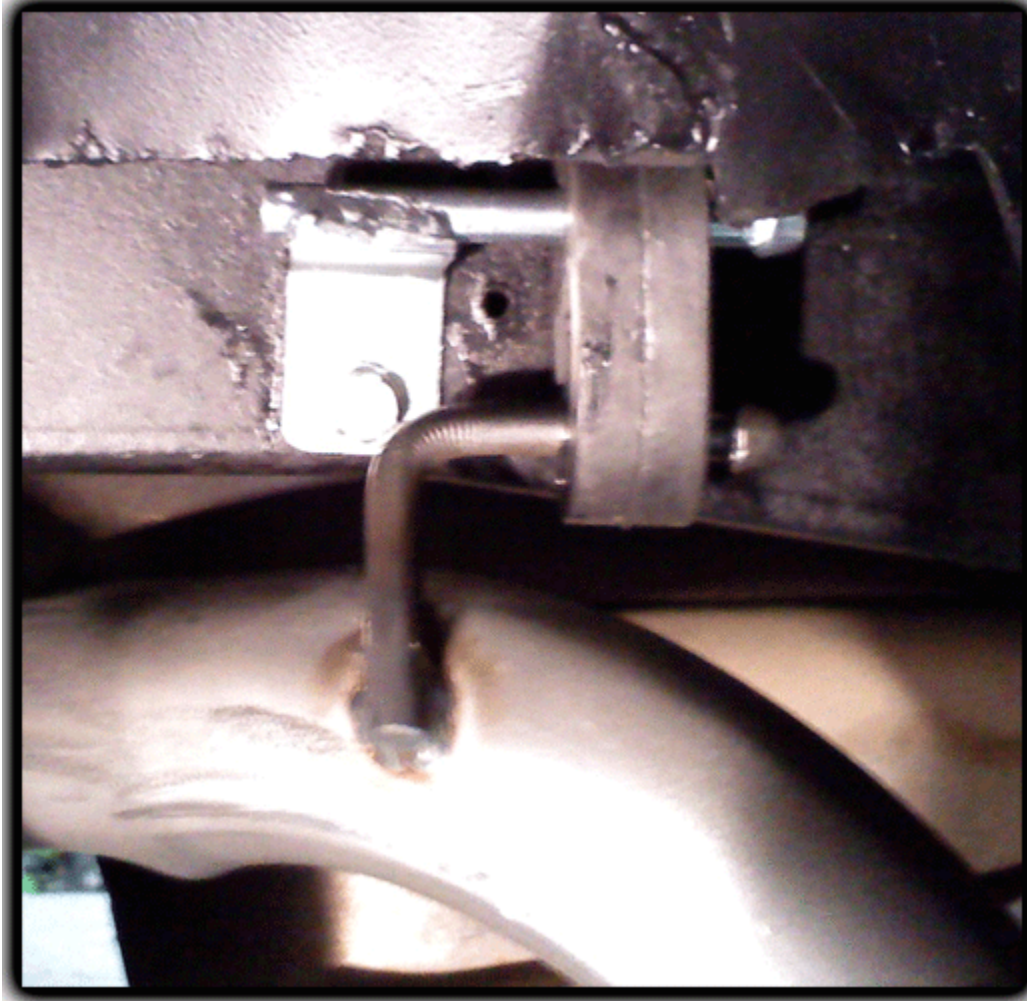
**Step 5**

Install rear muffler assembly over axle.

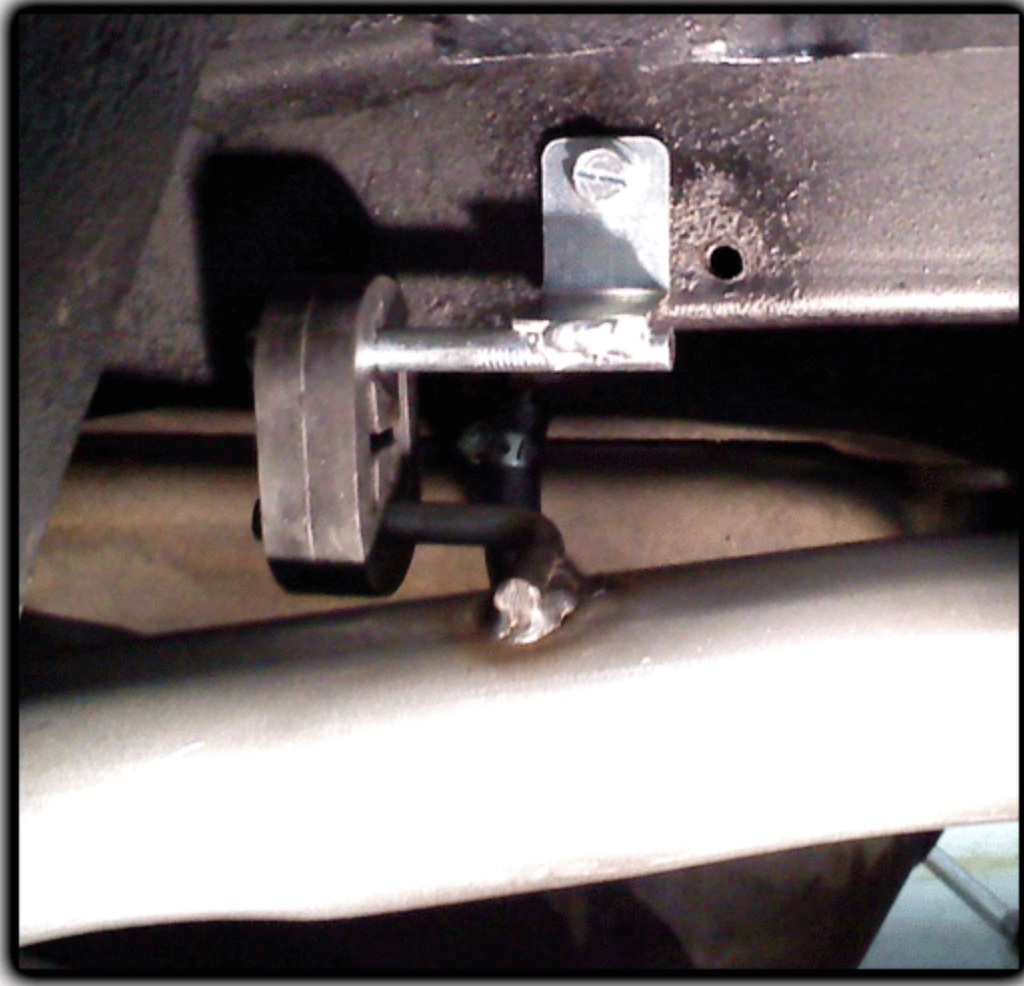


**Step 6**

Install drivers side tail pipe hanger to frame rail at rear wheel opening using factory hanger hole, rod pointing to rear of car.



Install passenger side tailpipe hanger to frame rail at rear wheel opening using factory hanger hole, rod pointing to rear of car.



Install remaining small rubber grommets on hangers.

### **Step 7**

Install tail clamps and tailpipes, insert hangers into grommets

### **Tightening process**

With all components now installed adjust forward hangers to position forward mufflers to desired position and tighten.

Remove forward strap and tighten head pipe to muffler clamps, reinstall strap and tighten.

Tighten head pipe flange, note clearance of pipe to drive shaft and body and tightening each nut as required to maintain even clearance.

Adjust tailpipes and hangers as needed tightening in desired position.

**Note: Torque Clamps to 50-55 ft lbs**